

Assignment 2: Visualization Critiques

Due Monday March 17th at 9am.

Instructions

Use the method discussed in class for critiquing the indicated visualizations.

Part I consists of visualizations from A1 that were done on the Florida voting data. I think some of these are strong and some need improvement. Assume the intended users are voting experts trying to find and understand problems with the voting machines, ballots and any other aspect of the mechanics of voting from the Florida 2000 presidential election. If you find that a visualization can be improved, sketch out or describe a better alternative (this can include changing some details about what was actually plotted, but staying within the main thrust of the visualization).

Part II consists of a live, interactive visualization that is found on the web. Develop your own user goals for that one.

Please do your own work. You should turn it in online here:

<https://www.ischool.berkeley.edu/upload/?s=i247>

Part I

All four of these are political topics. Two of these four visualizations (b and c) are based on the Florida voting data which is organized by county. Under votes and over votes are different types of voting errors (in undervotes, the voter did not choose a selection; in over votes, the voter chose too many selections), which when found mean the ballot must be discarded. There were several kinds of voting machines used, including votomatic and optical scan, which vary by county.

There is also an important difference in ballot layout, in 1-column vs 2-column format. For more background information, see

http://courses.ischool.berkeley.edu/i247/s08/assignments/florida_voting/fl200-background.ppt

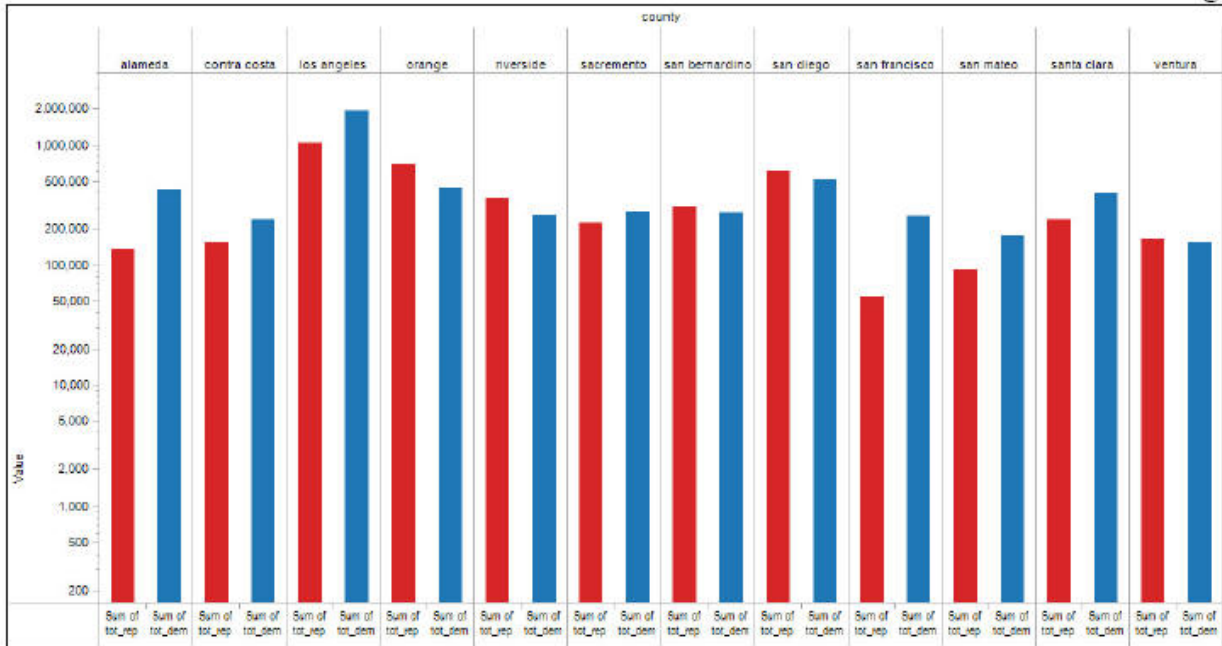
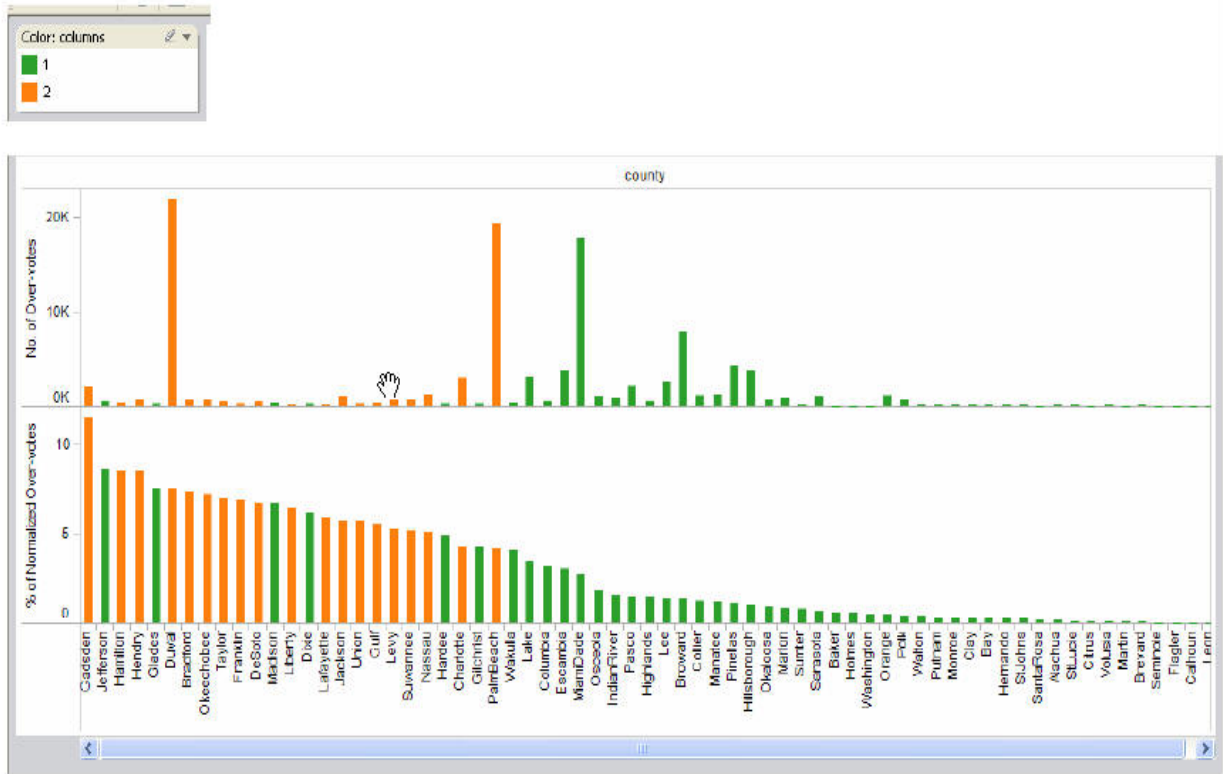
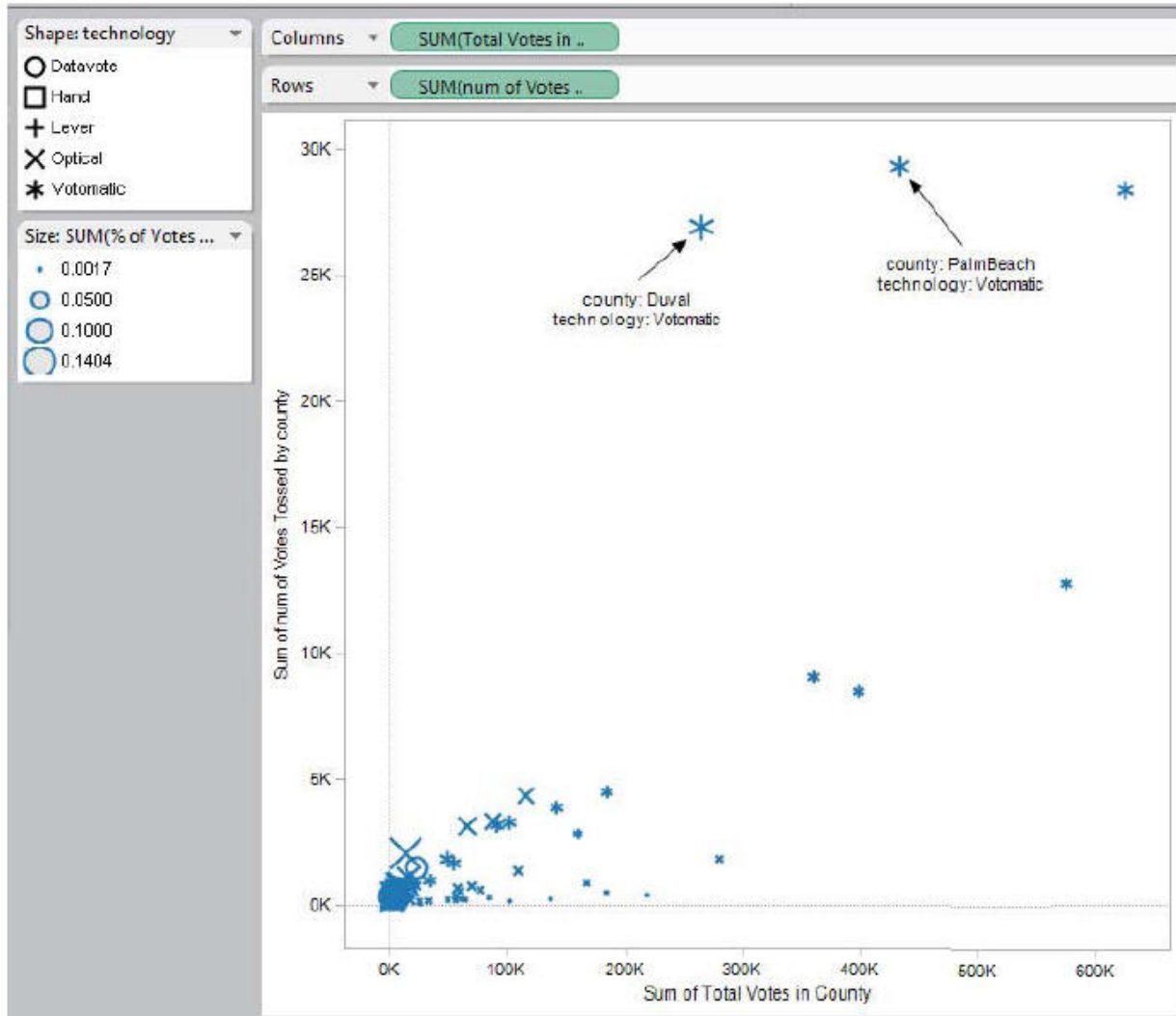


Figure 1 – comparing registered democrats to registered republicans within the 12 most populous counties. (Logarithmic scale)

(a) [Note this is from the 2004 general election in California.]



(b)



(c)

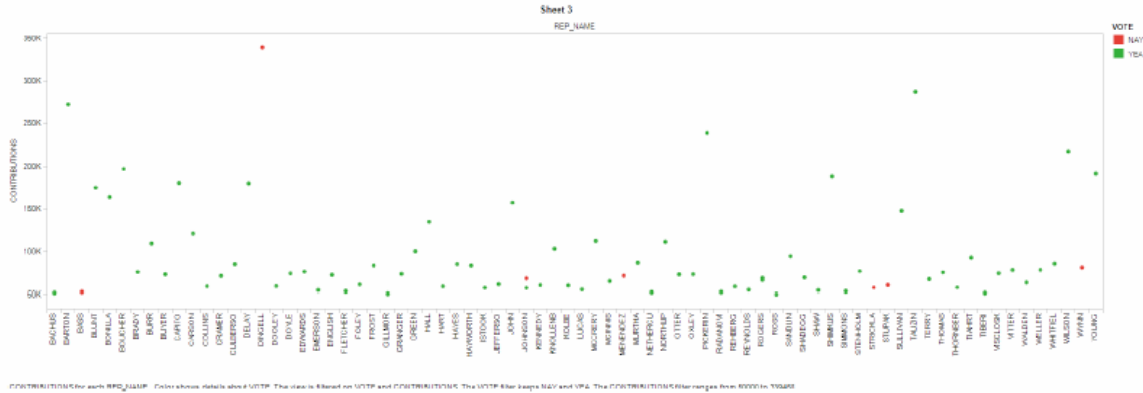


Figure 5a Contribution count by Representatives with Nay votes in red and Yay votes in green

(d) [This is a different but related dataset, showing monetary contributions to congresspersons and how they voted on particular bills.]

Part II

The WebBrain is an interactive visualization for navigation. You can see it in action here: www.webbrain.com

It turns out that version doesn't work on the mac, so view it on a lab machine or else look at the version on the top of the page at www.thebrain.com. But I think the one done on the web is more interesting.

Please critique the strengths and weaknesses of this visualization for its intended goals (which you can specify).